

Workforce Focus

From the Workforce Planning Board
of Waterloo Wellington Dufferin

In this Issue:

The Public Sector

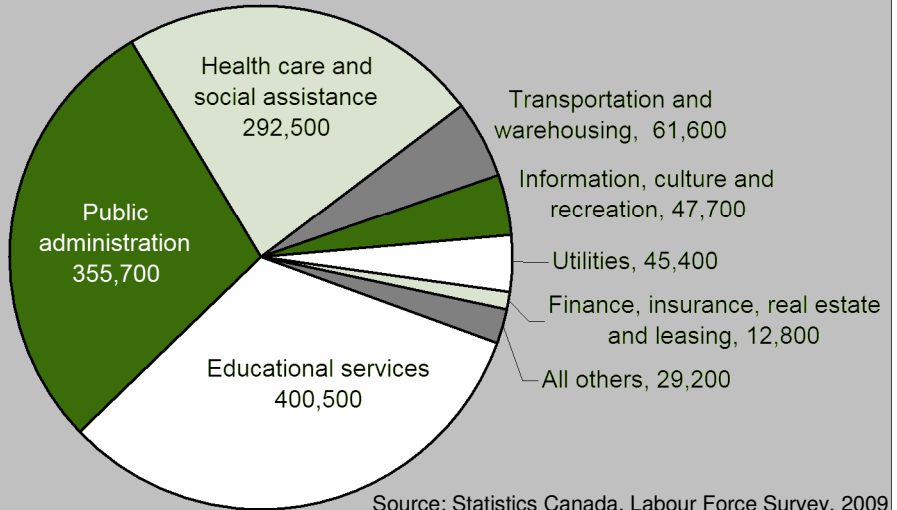
- Composition, Forecast, Career Fields
- Employment Trend, Prominent Occupations

The Workforce

Though public sector employment can be found in many industries, the majority takes place in three sectors: public administration, education, and health care and social assistance. Public Administration includes policing, firefighting, the military and a wide variety of administrative positions. A large majority of educational services are publicly operated, employing 31% of the public sector in 2009. Publicly operated health care and social services employ 23% of the public workforce. (Nearly as much health care employment is operated privately, though a large share of it is publicly funded). While Ontario's public sector employment has increased by 30% in the past ten years, the composition has changed little.

Public Sector Employment Composition

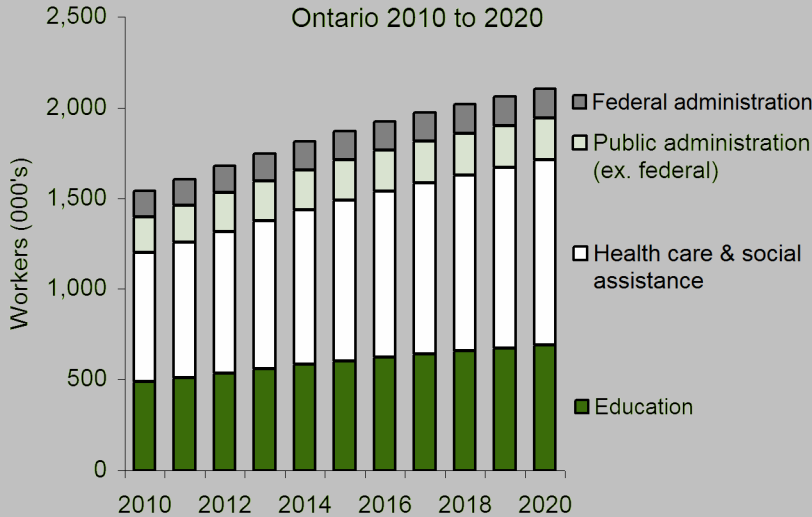
Workers by Industry, Ontario, 2009



Source: Statistics Canada, Labour Force Survey, 2009

Major Public Sectors Employment Forecast

Ontario 2010 to 2020



Source: Centre for Spatial Economics, 2009.

Outlook

With the global recession of the past two years, the provincial government moved quickly to restrain its spending and froze the size of the provincially operated workforce, with a commitment to reduce it by five per cent by March 31, 2012. This will be achieved through attrition and other measures, while there is no proposal for mandatory layoffs.

In the anticipated recovery and years following, the wider public sector at all levels of government is expected to continue creating new jobs, with most being in healthcare and education. Health care and social services are forecasted to grow by 45% for a net gain of 315,000 jobs by 2020. Education is forecasted to grow by 41% for a net gain of 200,000, while public administration at all levels is anticipated to grow by 13% for a total of 45,000 jobs.

Sources: Government of Ontario-2010 Budget, and Centre for Spatial Economics, 2009.

Career Streams in the Public Sector

Administrative and Support Services • Communications and Marketing • Consulting and Planning • Corrections and Enforcement • Customer and Client Services • Education and Training • Finance and Economics • Health and Social Services • Human Resources • Information Technology • Inspections and Investigations • Lands and Resources • Legal Services • Policy and Analysis • Maintenance and Trades • Management • Science and Engineering

Source: Government of Ontario, 2010



Workforce Planning Board
of Waterloo Wellington Dufferin

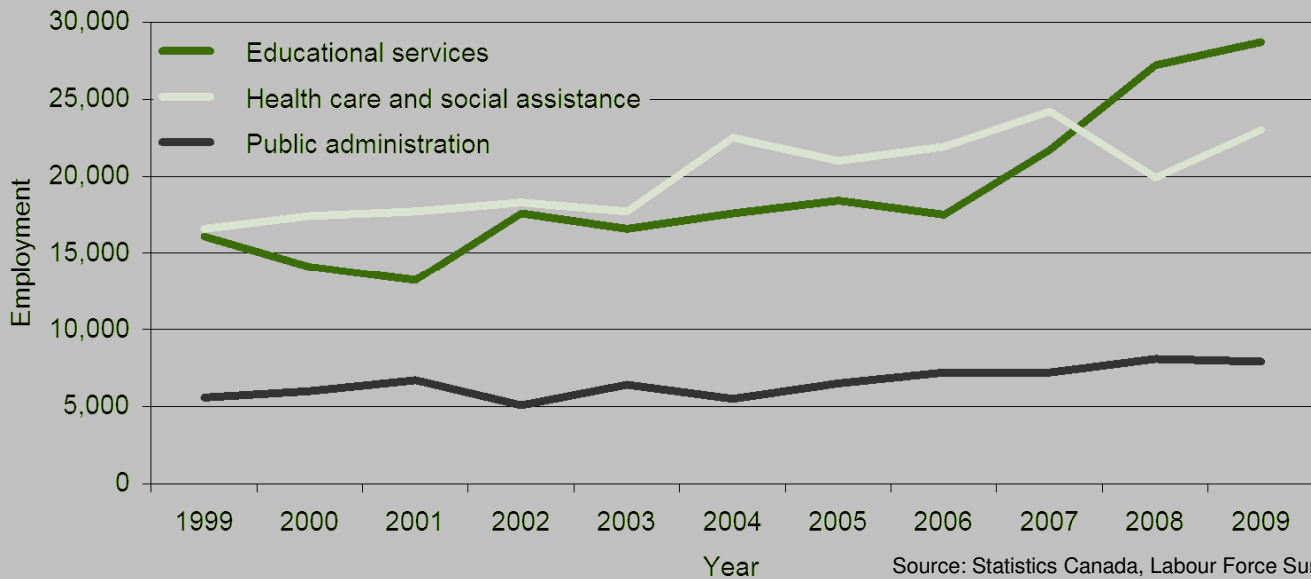
Guiding Today's Workforce for Tomorrow's Workplace

Contact the Workforce Planning Board at:
218 Boida Ave, Unit 5, Ayr, ON, N0B 1E0 519.622.7122
E-mail: info@workforceplanningboard.com
Web: www.workforceplanningboard.com

Created by : Dane Rice

Public Sector Employment Trend

Major Public Sectors, Kitchener Census Metropolitan Area, 1999-2009



Source: Statistics Canada, Labour Force Survey, 2009

*The Kitchener Census Metropolitan Area includes Kitchener, Waterloo, Cambridge, Woolwich and North Dumfries

Local educational services employment grew by 12,600 jobs from 1999 to 2009, while health care and social services grew by 6,400 jobs over this period and public administration by 2,300 jobs. (Health care and social assistance in this chart includes both publicly and privately operated services).

Prominent Occupations in the Local Public Sector

Waterloo-Wellington-Dufferin

Source: Statistics Canada, Census Data, 2006

	Employed	Steady Previous Growth	High Retirement Rate
Education			
Elementary school and kindergarten teachers	5,940		✓
Post-Secondary Teaching and Research Assistants	3,505	✓	
Secondary school teachers	3,350		✓
Early childhood educators and assistants	3,350	✓	
University professors	2,970	✓	
Healthcare and Social Assistance			
Registered nurses	4,350		✓
Nurse aides, orderlies and patient service associates	3,413	✓	✓
Community and social service workers	1,505	✓	
Receptionists and Switchboard Operators	1,150	✓	✓
Public Administration			
Police officers (except commissioned)	1,075	✓	
Firefighters	515		✓
General office clerks	470		✓
Financial auditors and accountants	320	✓	

Large occupations will tend to have more frequent opportunities and ongoing replacement needs. Steady previous growth in this table refers to positive local employment change between both 1996 and 2001, and 2001 and 2006. Steady previous growth could indicate a particularly stable occupation. A high retirement rate in this table refers to a forecasted 10-year retirement rate of at least 15% higher than that of the total local workforce.

**EMPLOYMENT
ONTARIO**

SEE MORE LABOUR MARKET INFORMATION ON THE
WEB AT WWW.WORKFORCEPLANNINGBOARD.COM



Ontario

THE VIEWS EXPRESSED IN THIS DOCUMENT DO NOT NECESSARILY REFLECT THOSE OF
THE GOVERNMENT OF ONTARIO.

Workforce Focus is an original publication of the Elgin, Middlesex, Oxford Local Training Board